

# PD60-2

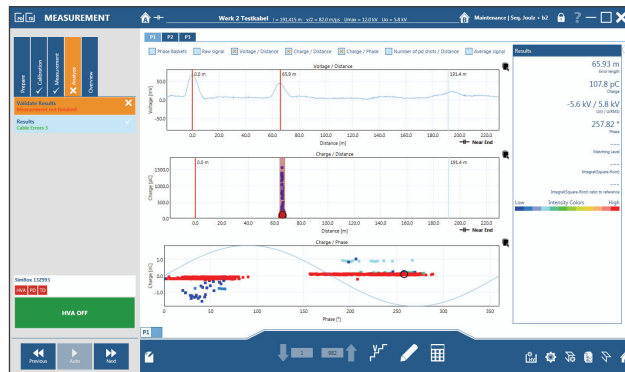
## PARTIAL DISCHARGE DIAGNOSTICS SYSTEM

The b2 electronic GmbH PD60-2 Partial Discharge (PD) diagnostics system for diagnosis of medium voltage cables, rotating machinery and transformers.



### PARTIAL DISCHARGE DIAGNOSTICS (PD)

The Partial Discharge diagnostics on medium and high voltage cable offers the possibility of early detection of vulnerabilities through a precise localization of PD faults in cables and their connections (joints and terminations), often caused by mechanical damage or a faulty installation process.



[www.b2hv.com](http://www.b2hv.com) | [info@b2hv.com](mailto:info@b2hv.com)

### Features

- Compact, light and portable devices
- b2 Suite® - comprehensive diagnostic software and database
- Display of cable route on OpenStreetMap®
- Very simple and clear measurement process
- Manual and automatic diagnostic mode
- Exact PD localization (PD mapping)
- Phase-resolved PD display (PD Pattern)
- PD Magnitude
- PD inception and extinction voltage
- PD rate
- High noise suppression by filtering
- Extensive reporting
- Test setup according to IEC 60270 and calibration
- Easy upgradeable with Tan Delta (TD) diagnostics system

# PD60-2

## PARTIAL DISCHARGE DIAGNOSTICS SYSTEM



HVA68-2<sup>1</sup> (optional)



PDTD60-2



PDC

## PD60-2 DIAGNOSTICS WITH VLF

The diagnostic system PDTD60-2 (in combination with a VLF generator<sup>1</sup>) enables comprehensive diagnosis with sinusoidal output voltage with constant frequency, which is a prerequisite for the comparison of PD measurement results of cables with different lengths. Load-dependent and therefore constantly changing measurement frequencies offer no basis for this. The sine wave output voltage is the only described VLF voltage form in IEEE400.2-2013 for partial discharge measurements and provides clear procedures and quality control procedures.

The comprehensive monitoring and diagnostics software b2 Suite<sup>®</sup> makes the process easier and leads you through the diagnostics process. The database solution of b2 Suite<sup>®</sup> allows to process the data quickly and can be retrieved at any time.



### Compact, lightweight and portable solutions

From small portable unit for on-site use (e.g. off-shore) to built-in solutions for test van versions.

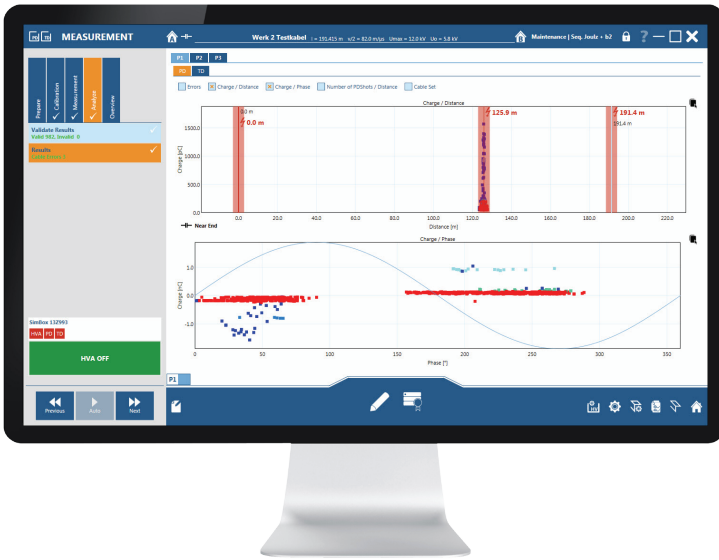


### Algorithms for detection of PD activities

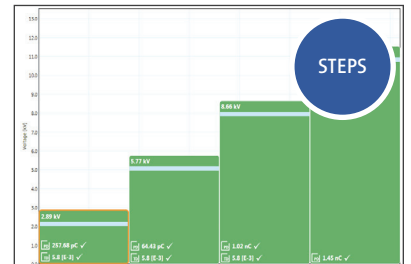
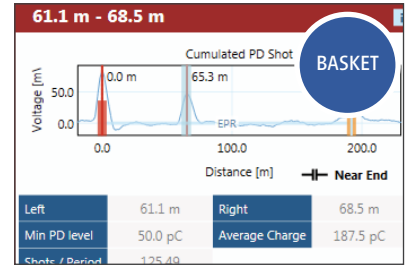
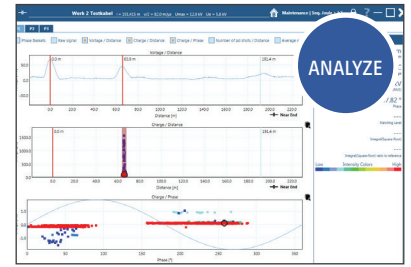
The b2 Suite<sup>®</sup> distinguishes between valid and invalid PD signals, and then separates them. This facilitates the easy interpretation of results for the user.

<sup>1</sup> VLF (0.1 Hz) high voltage generator (required) is not included in the scope of delivery.

# b2 SUITE® SOFTWARE



b2 Suite® - Software



## FEATURES

- Automatic or manual modes for testing and PD diagnostics
- Precise location of PD events on cable insulation, terminations and joints
- Presentation of PD events over total cable length
- Phase-resolved presentation (pattern) of PD
- PD inception- and extinction voltage
- Guided Diagnostics Process - leads the operator through diagnostics step by step
- Automatic & manual gain and trigger setting
- Sets or recommends measuring parameters
- Recommended by Standards (CENELEC & IEEE), with guidance for interpretation in literature
- Analog and digital frequency filters
- Direct Mapping of cable trace in OpenStreetMap®
- PD mapping
- Display of parasitic frequencies (bandpass and bandstop for parasitic frequencies)



### Database

The comprehensive b2 Suite® database enables easy analysis and evaluation of the PD measurement. A fast search function for measurements and easy reproducibility of a measurement are among the key features.



### Reporting

Reporting - be it simple or comprehensive - takes one click. Individual design for reporting and easy integration of data and files. Measurement in as little as 15 min incl. reporting.

# PD60-2

## TECHNICAL DATA

Partial Discharge Diagnostics (PD)		
Article number	SH0230	
Input supply voltage	110/240 VAC, 50/60 Hz	
Operating voltage	sinusoidal	44 kV rms, 60 kV peak
	frequency	0.01 - 0.1 Hz in steps of 0.01 Hz (default 0.1 Hz) - auto frequency
HV coupling capacitor	capacitance	~ 1 nF
	dimensions, weight	L 330 x W 280 x H 730 mm, 20.7 kg
HV filter	capacitance	~ 1 nF
	dimensions, weight	L 300 x W 280 x H 720 mm, 19.9 kg
Filter	analog & digital	
Velocity range (v/2)	10-150 m/μs	
Measuring range	100 km	
PD background level	< 10 pC	
PD localization accuracy	1%	
PD resolution	0.1 pC, 0.1 m	
Sample rate	200 MS/s	
Bandwidth	100 MHz, analog filter	
Signal amplification	0-52 dB (1 channel) , 0-72 dB (2 channel)	
Environment	temperature: storage -20°C to + 65°C, operating -5°C to + 45°C	

Control and Diagnostics Software b2 Suite®	
Features	<ul style="list-style-type: none"> <li>• Automatic or manual modes for PD diagnostics</li> <li>• Guided diagnostics process</li> <li>• Comprehensive data base</li> </ul>
Control	b2 VLF generator control <sup>3</sup> , and b2 Suite® Software
Measurement	Cable length with PD activities, PD location, PD mapping, background noise, PD magnitude, sine wave imposed display, PDIV and PDEV, etc
System requirements	Windows 8 and 10, 64 Bit operating system
Scope of delivery	Unit (two parts), PDC calibrator incl. accessories, HV cable, PD connection cable (2), power and earthing cable, corona shields, transport boxes (2), b2 Suite® V1.8 software <sup>2</sup> (2 licences), database, operating manual
NOT in Scope of delivery	Computer/PC, VLF (0.1 Hz) generator <sup>3</sup> (voltage source), b2 Suite V2 (optional)

<sup>1</sup> Calibration Certificate for variable frequencies optional, <sup>2</sup> b2 Suite V2 optional,

<sup>3</sup> Please note: A VLF (0.1 Hz high voltage generator (required) is not included in the scope of delivery.



### Upgradeable with Tan Delta (TD) diagnostics system

The PD60-2 system can be easily upgraded with Tan Delta diagnostics. In that case, Partial Discharge (PD) and Tan Delta (TD) diagnostics can be performed simultaneously.